

Systems of Sustainable Consumption and Production

SCP – a prerequisite for shared prosperity on a crowded planet

With global population projected to reach 9.6 billion by 2050, and in view of finite resource availability and the threatened resilience of the Earth system as well as large differences in inequality of opportunity and material standards of living, current patterns of global development are not sustainable. *A fundamental restructuring of current systems of production, distribution and consumption is required to accommodate a growing human population while providing for enhanced wellbeing for people worldwide.*

Agenda 21 (Rio 1992): First international agreement highlighting sustainable consumption and production (SCP).

SDGs: SDG 12 for responsible consumption & production; cross-cutting relevance to numerous other goals (health and well-being, clean energy, decent work and economic prosperity, and sustainable cities and communities)



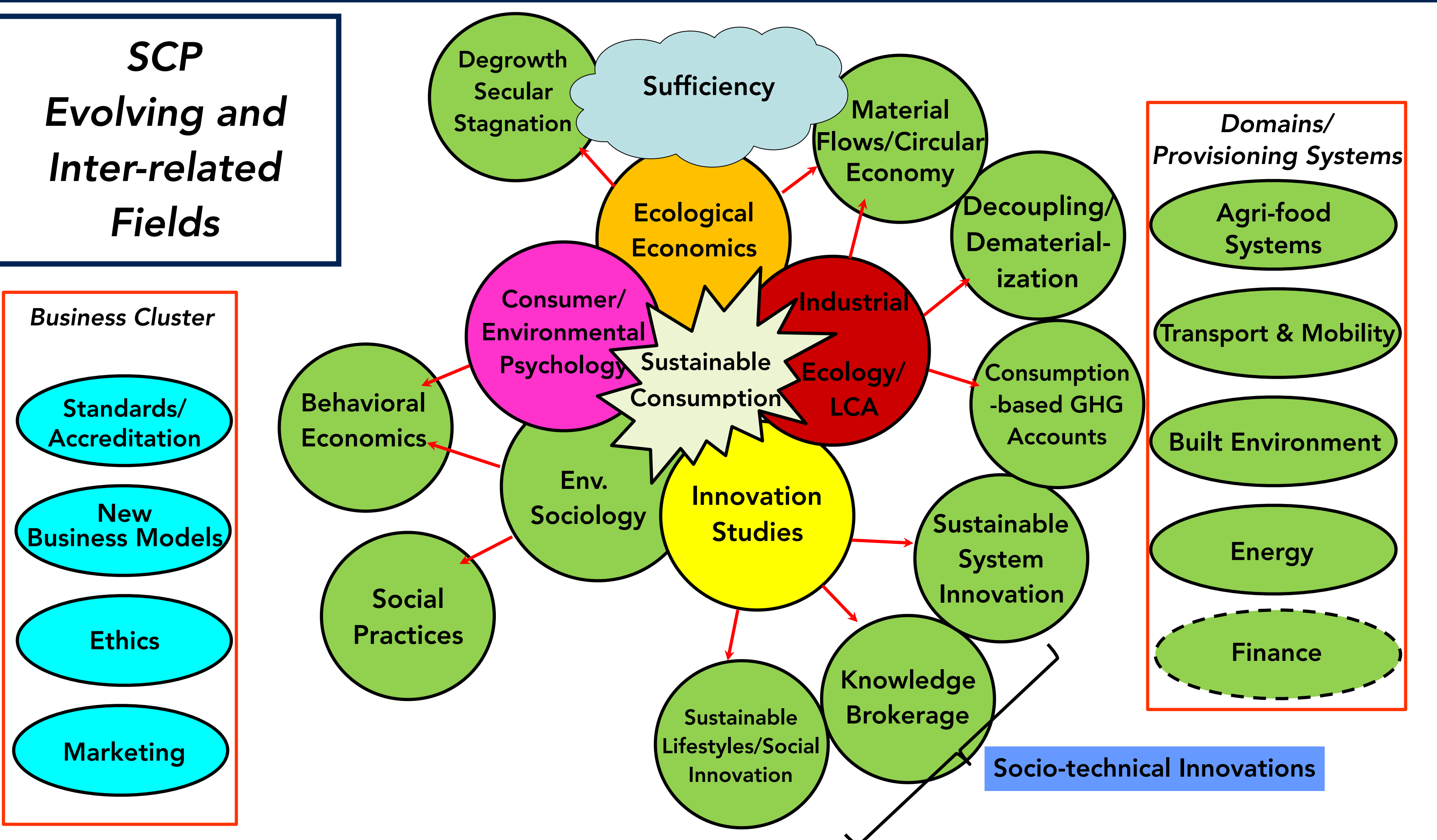
The need for a systems approach to provisioning

FE SSCP KAN emphasises the need to address
whole provisioning systems
(consumption practices and production conditions)
life-cycle impacts
economic, political, social and cultural factors that impel
consumerist lifestyles

The SSCP KAN seeks to:

- Develop and promote more systemic ways of understanding consumption and production from the viewpoint of sustainability
- Strengthen collaboration between communities of researchers and practitioners working in disparate fields of SCP

SCP Evolving and Inter-related Fields



Weak vs. Strong SCP

Weak SCP or "green" consumerism

individual behaviour-change premised largely on consumer education and eco-labelling

more efficient and less polluting technologies

most policy initiatives geared towards SCP

has largely failed to rein in aggregate resource use and pollution

Strong SCP (wider systems perspective)

structural understanding of macro-level factors

limit volumes of production and consumption

raise critical questions about social and economic equity, continued economic growth and individual and societal well-being.

Linking knowledge and action for transformative change

The KAN emphasises in its research and public engagement the need...

...to catalyse more resolute collective action based on strong SCP perspectives and to build and disseminate knowledge on how this can be done in practice.

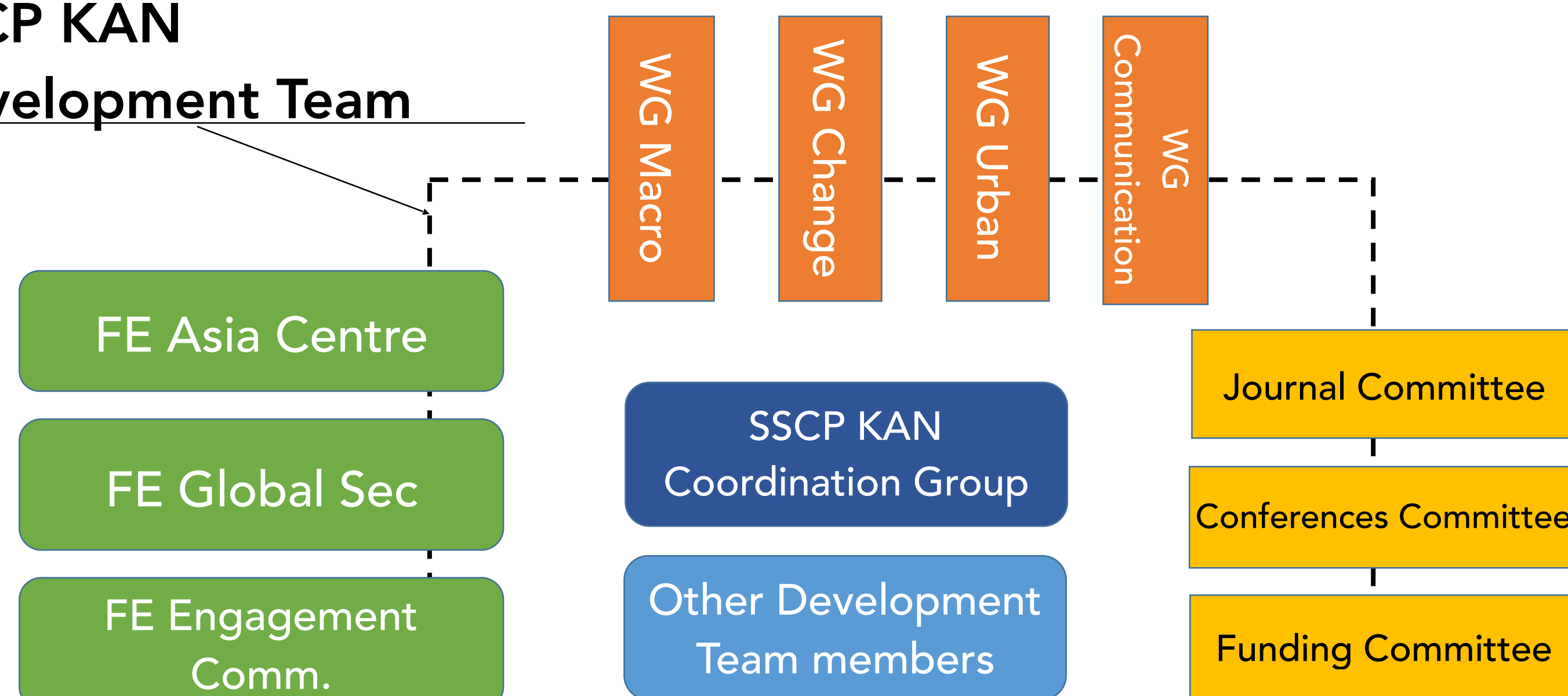
...to improve understanding of opportunities for overcoming obstacles to the uptake of strong SCP approaches and to take advantage of fortuitous circumstances when they arise.

Four Working Groups

- Ecological macroeconomics and political economy of a transition to sustainable lifestyles
- Urban provisioning systems and well-being
- Social change beyond consumerism
- Communications and outreach

SSCP KAN

Development Team



- > The Development Team (DT) has overarching responsibility for the KAN establishment process
- > The DT holds monthly calls to review progress and provide guidance
- > The DT has around 15 members
- > The DT includes representatives of all SSCP KAN WGs and Committees as well as of FE bodies
- > Some DT members are not part of any WG or Committee
- > Committees and WGs can have members who are not on the DT

What's next?

2017~
SSCP KAN
Journal Launch!



Research & Engagement Plan Workshop
May 7-9, 2017
Annapolis, MD, USA



GRF 3rd International Conference
University of Sussex
June 27-29, 2017



Conference @ Copenhagen Business School
June 2018



Poster by: SSCP KAN Development Team

Hein Mallee (RIHN), Maurie Cohen (New Jersey Institute of Technology), Magnus Bengtsson (IGES), Steven R. McGreevy (RIHN), Patrick Schroeder (IDS)

futureearth.org/future-earth-sscp Contact: sscp_kan@futureearth.org